

# St Lawrence Church of England Primary School Rowhedge

Telephone: 01206 728517

Email: [office@st-lawrence-pri.essex.sch.uk](mailto:office@st-lawrence-pri.essex.sch.uk)

Website: [www.st-lawrence-pri.essex.sch.uk](http://www.st-lawrence-pri.essex.sch.uk)



10<sup>th</sup> January 2019

Explore

Excite

Excel

## Term Dates

- Thursday 17<sup>th</sup> January @ 7:30pm: PTA AGM
- Thursday 24<sup>th</sup> January: Foundation Stage Weight / Height / Distance Vision check
- Monday 11<sup>th</sup> February – Thursday 14<sup>th</sup> February: Year 5 Bikeability Training
- Monday 18<sup>th</sup> February – Monday 25<sup>th</sup> February inclusive: Half Term Break
- Monday 4<sup>th</sup> March – Monday 1<sup>st</sup> April @ 1pm: Years 4, 5, and 6 Maths SATs Attack Course
- Friday 15<sup>th</sup> March: Red Nose Day
- Thursday 4<sup>th</sup> April: Parent Consultation Evening
- Friday 5<sup>th</sup> April: Last day of Term

## Lunch Menus

Please can parents and carers bring lunch menus to the office directly by the deadline provided. Every three weeks there are a number of children who haven't handed theirs in. The office spend an extraordinary amount of time emailing, texting and calling home multiple times, as well as speaking to children to see if they can check their bags etc. PLEASE try to help by returning them on time. Thank you so much!



## Headteacher Awards

Daisy and Connor in Year 1, Ffion, Tilly, Logan and Cleo in Year 2, Kiersten in Year 3



What would life be like without gravity?

By Jack L in Year 5

**Winning Answer by George Sanderson in Year 1**

*It would be hard to learn because we couldn't sit down at tables or see the board it would float!*

By doing what you LOVE, you INSPIRE and awaken the hearts of others.

Foundation Stage have had fun writing Happy New Year messages to each other this week using chalks on their outside play area.

Orange Class would love to meet Father Christmas. If they ever do they have written lots of questions to ask him. They had some very interesting and curious ones.

Year 2 have made paper collages in art this week using tissue paper to represent weather. Perhaps have a chat about the weather this weekend with your child?

Green Class have finished their topic about light by drawing observational pictures of candles and writing their own prayers. They also made and decorated Diva lamps.

In Year 4 the class applied their knowledge of shape to make symmetrical stars. They also used a variety of nets to make different 3D boxes and compared each one.

Year 5 had a fantastic stone age day this week making clay pots, painting cave pictures, and exploring different tools and weapons that would have been used at the time.

Louis, Milo and James set everyone a mathematical murder mystery challenge. They applied lots of their new skills and knowledge to set really tricky clues.

## Whole school attendance this week: 95.72 %

	Foundation Stage	Year 1	Year 2	Year 3	Year 4	Year 5	Year 6
Percentage	94.26%	98.98%	96.25%	93.00%	96.55%	98.75%	91.96%
Absences	14	2	9	14	8	3	18
Lateness	3	2	2	1	5	4	1

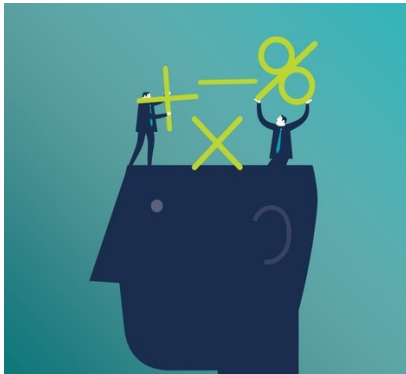
### Bikeability

If you put your Year 5 child's name down for Bikeability, you would by now have received a letter confirming the date of their sessions and the equipment required. Please let me know if you have any questions.



### Maths SATS Attack

I am really pleased to confirm that we have had enough interest in the Maths SATS attack course to be able to run it, so if you put your name forward we look forward to seeing you on Monday 4<sup>th</sup> March at 1pm for 5 weeks of MATHS.



### Clubs and Music Lessons

Clubs and music lessons begin next week and run for 10 weeks. The dates are all on the school website. We are still waiting for a small amount of payments in. If the club has a waiting list your child's name may already have been removed, however if not payments **MUST** be made by the end of the week. (This is not the case for running club and lessons with Joy Morris, as payments are made directly to the club leader). Thank you!



### Front Entrance

**It is really important that unless you are late or have a prior agreement to use the front entrance, that all children enter the school via the back gate. If you are running late and therefore need to use the front entrance, you **MUST** come in with your child – as they will need to be signed in. If a child comes in alone we will need to call a parent or carer to come and sign them in. Thank you so much!**

### PE Kits

Please make sure your child has a black jumper and jogging bottoms in their PE kits. Children still like to be outside for PE even during these cold months, but it's not very comfortable in just shorts and a t shirt! Thank you.



# JOIN OUR PTA

## everyone is welcome

Come along to the PTA AGM on **Thursday 17<sup>th</sup> January at 7:30pm** in the community room if you would like to discuss last year's events, put forward any ideas for or discuss next year's events, vote in new post holders, or simply to sit hear about us. The PTA relies heavily on volunteers, and the AGM is a great opportunity to put your name forward to help on specific events, or even to run an event. If you would like to nominate yourself or someone you know to be a post holder please submit the nomination in writing or by email to the office.

*The PTA would love to hear from you and are grateful for all and any involvement!*

### Head Teacher: Kerry Malcolm

St. Lawrence Church of England Primary School  
Rectory Road  
Rowhedge  
Essex CO5 7HR

*If your personal details have changed, or you would like to update the consents we hold for you, please notify us in writing.*